



### Single Action Hinge

REF: FE105/100

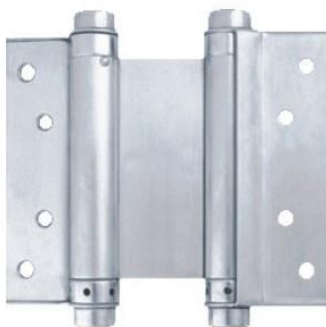
#### Standards and Certifications:

- ✔ *Quality and performance*  
BS EN 1935:2002

Materials:

- Stainless Steel

Reference	Size	Specification
FE105/101	76mm	Single Action
FE105/104	102mm	
FE105/105	127mm	
FE105/105	152mm	



### Double Action Hinge

REF: FE106/200

#### Standards and Certifications:

- ✔ *Quality and performance*  
BS EN 1935:2002

Materials:

- Stainless Steel

Reference	Size	Specification
FE106/203	76mm	Double Action
FE106/204	102mm	
FE106/205	127mm	
FE106/205	152mm	
FE106/208	203mm	